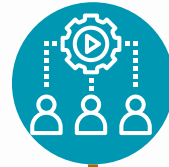


Columbia Greene Housing Coalition (CGHC)

The CGHC Continuum of Care is a two-county collaborative which partners with local community members and organizations to end homelessness through a comprehensive planning and assessment process that endeavors to engage and educate the community about the housing needs of our most vulnerable populations.



What are the key roles of a CoC?

To respond to and end homelessness

Overseeing Coordinated Entry (CE)

Oversight of the Homeless Management Information System (HMIS)



What is a Continuum of Care (CoC)?

Federal Funding Stream

-and-

Planning Body

CoC refers to both

The CoC Planning Body makes decisions about local CoC funding for homeless programs and coordinates services and housing designed to support the unhoused



What are CoC-Funded Programs?

Permanent Supportive Housing (PSH)



it is an affordable housing option that has an indefinite rental assistance paired with services to help homeless people with disabilities achieve housing stability



Rapid Re-housing (RRH)

a model that emphasizes housing search and relocation services and short-and medium term- rental assistance to move homeless people as rapidly as possible into permanent housing



Transitional Housing (TH)

these are temporary housing units designed to help people gain stability through supportive services and successfully transition into permanent housing.



Support Services Only (SSO)

service providers conduct outreach to sheltered and unsheltered homeless persons, link clients with housing or other necessary services and provide ongoing support.



Who is part of the CoC?



CGHC COMMITTEES



Executive Board

The CGHC CoC board is elected the collective of individuals designated to provide oversight and governance on behalf of the CoC. The CoC Board's responsibilities are defined by the CoC and must be described in the CoC's bylaws.



HMIS/PIT

Responsible for the electronic management of data and the required Point-in-Time Survey Instrument, deployment and data collection.



Coordinated Entry Committee

The Coordinated Entry (CE) committee reviews the priority listing and identifies housing opportunities for PSH units. CoC and non-CoC funded community programs serve as a point of entry through a no wrong door approach. This allows for any individual experiencing homelessness to have access to the Coordinated Entry Assessment and be referred to eligible CoC funded housing programs



Ranking and Monitoring

Responsible for the design, operation, and implementation of a collaborative process for the development of funding applications, including funding priorities. The committee is responsible for ensuring the monitoring is done and knowing results of monitoring. Application ranking recommendations will be provided to the CoC Executive Board and shared with the general Membership. Performance evaluations will be used as a tool to identify and respond to project specific strengths and needs. Performance evaluations will be shared with the Executive Board. Membership is open to CoC members. To avoid conflict of interest, only non-funded agency representatives are permitted to rank and review CoC funding applications.



Education/Outreach

Responsible for engaging and educating local community members and elected officials about homelessness and the need for permanent housing opportunities with a mechanism to routinely access community feedback on the issue.

How to join the CoC:

Complete a Membership Application

[CLICK HERE](#)



You can sign up for committees by submitting a membership application or by emailing Lori Rhodes (lrhodes@caresny.org)