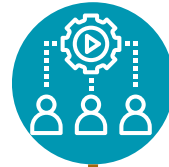


Rensselaer County Homeless Services Collaborative (RCHSC)

The mission of the Rensselaer County Homeless Services Collaborative (RCHSC), the Rensselaer County Continuum of Care, is to work to ensure a seamless continuum of housing and supportive services aimed at the elimination of homelessness in Rensselaer County, New York.



What are the key roles of a CoC?

To respond to and end homelessness

Overseeing Coordinated Entry (CE)

Oversight of the Homeless Management Information System (HMIS)



What are CoC-Funded Programs?

Permanent Supportive Housing (PSH)



it is an affordable housing option that has an indefinite rental assistance paired with services to help homeless people with disabilities achieve housing stability

Rapid Re-housing (RRH)



a model that emphasizes housing search and relocation services and short-and medium term- rental assistance to move homeless people as rapidly as possible into permanent housing

Transitional Housing (TH)



these are temporary housing units designed to help people gain stability through supportive services and successfully transition into permanent housing.

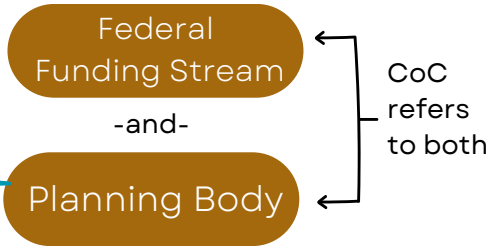
Support Services Only (SSO)



service providers conduct outreach to sheltered and unsheltered homeless persons, link clients with housing or other necessary services and provide ongoing support.



What is a Continuum of Care (CoC)?



The CoC Planning Body makes decisions about local CoC funding for homeless programs and coordinates services and housing designed to support the unhoused



Who is part of the CoC?



RCHSC COMMITTEES



Board

The RCHSC Board of Directors creates standing and ad-hoc committees, reviews the plans of work of the committees and makes recommendations to the Coalition for action; take action on the necessary business of the Coalition and conduct other such business as directed by the coalition. The primary function of the Board is to move forward the goals and objectives of the strategic plan.



Systems Committee

Focuses on engaging, collaborating, and developing communications protocols with system partners to reduce homelessness and/or improve transitions from other systems of care, such as health, mental health, foster care, criminal justice, first responders, and the Department of Social Services.



Coordinated Entry Committee

The Coordinated Entry (CE) committee focuses on the development of and compliance with Policies and Procedures related to Coordinated Entry. The Committee reviews all rejection decisions utilizing case conferencing to discuss interventions used to date and resolve barriers to securing permanent housing.



Prevention Committee

Responsible for building relationships between the City Of Troy, Bureau of Code Enforcement and City of Rensselaer Building Department to prevent avoidable code closures and develop proactive strategies to address issues that lead to evictions/homelessness.



Data & Goals Committee

Reviews HMIS data quality, while working with the HMIS Systems Administrator to ensure proper and effective HMIS policies and procedures; review of program performance; and the review of the Continuum of Care's performance related to its goals.



NOFA Committee

This committee is responsible for the design, operation and collaborative process for the development of relevant government funding applications, including funding priorities and the number and type of applicants through the Rand and Review Process.



HMIS Advisory Committee

This Committee is to work with the HMIS System Administrator to ensure proper and effective HMIS policies and procedures.



Strategic Planning Committee

Is responsible for review, preparation, and formulation of the Rensselaer County plan to end homelessness with respect to system planning, review data, needs and gaps in the overall implementation and coordination of the housing service system.



Lived Experience Committee

The Committee comprises individuals who have firsthand experience with homelessness. Our committee leverages this lived experience to provide valuable insights and recommendations to the RCHSC and actively advocates for positive change within the RCHSC Homeless Response System.



Complete the membership application to join the CoC

Click to Apply

