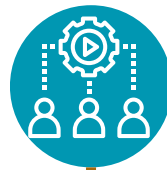


Points North Housing Coalition (PNHC)

The Points North Housing Coalition is dedicated to preventing, reducing and combatting homelessness by ensuring that an effective system of care and services is in place for Jefferson, St. Lawrence and Lewis Counties.



What are the key roles of a CoC?

To respond to and end homelessness

Overseeing Coordinated Entry (CE)

Oversight of the Homeless Management Information System (HMIS)



What are CoC-Funded Programs?

Permanent Supportive Housing (PSH)



it is an affordable housing option that has an indefinite rental assistance paired with services to help homeless people with disabilities achieve housing stability



Rapid Re-housing (RRH)

a model that emphasizes housing search and relocation services and short-and medium term- rental assistance to move homeless people as rapidly as possible into permanent housing



Transitional Housing (TH)

these are temporary housing units designed to help people gain stability through supportive services and successfully transition into permanent housing.



Support Services Only (SSO)

service providers conduct outreach to sheltered and unsheltered homeless persons, link clients with housing or other necessary services and provide ongoing support.



What is a Continuum of Care (CoC)?

Federal Funding Stream

-and-

Planning Body

CoC refers to both

The CoC Planning Body makes decisions about local CoC funding for homeless programs and coordinates services and housing designed to support the unhoused



Who is part of the CoC?

People with Lived Experience

Emergency Housing Providers & Non-Profits

Emergency Response Entities

Local/State Government Officials

Healthcare Providers

Community Advocates

Faith-based Community Members

CoC Members

PNHC COMMITTEES



Board

There shall be a Board of Directors, empowered to: create Standing and Ad-Hoc Committees; review the plans of work of the committees and make recommendations to PNHC for action; transact necessary business of PNHC in the intervals between meetings of PNHC; and conduct such other business as PNHC shall direct.



Systems Committee

The Systems Committee will work with tri-county agencies, providers, and community partners to reduce homelessness and/or prevent episodes of homelessness by developing systems of care and improvement plans.



Homeless Peer Advisory Committee

The Committee is made up of advocates and people who are experiencing or have previously experienced homelessness or risk of homelessness. The Committee provides a platform for voices who are closest to the issue of homelessness PNHC is working to solve. The Committee provides feedback and recommendations to PNHC agencies that work directly with those experiencing homelessness in Jefferson, St. Lawrence, and Lewis Counties.



Operations Committee

The Committee prepares, plans, and makes recommendations for review by the Board of Directors and carries out action plans approved by the Board with respect to the design, operation, and following of a collaborative process for the development of funding applications including funding priorities and the number and type of applicants.



Governance Committee

A Governance Committee shall facilitate development and monitoring of policies and procedures and by-laws, processing of membership Board nomination forms, facilitate elections, and encourage, leadership and membership development and diversity in all PNHC activities.



HMIS Advisory Committee

This Committee is to work with the HMIS System Administrator to ensure proper and effective HMIS policies and procedures.



Coordinated Entry Committee

The Coordinated Entry (CE) committee is responsible for creating the coordinated entry process in the North Country region. It reviews all stages of the assessment, referral, application, vacancy posting and acceptance/denial processes.



Complete the membership application to join the CoC

Click to Apply

