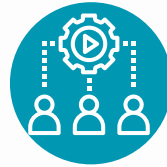


# Franklin Essex Housing Coalition

The Franklin Essex Housing Coalition is dedicated to preventing, reducing and combatting homelessness by ensuring that an effective system of care and services is in place.



## What are the key roles of a CoC?

To respond to and end homelessness

Overseeing Coordinated Entry (CE)

Oversight of the Homeless Management Information System (HMIS)



## What is a Continuum of Care (CoC)?

Federal Funding Stream

-and-

Planning Body

CoC refers to both

The CoC Planning Body makes decisions about local CoC funding for homeless programs and coordinates services and housing designed to support the unhoused



## What are CoC-Funded Programs?

### Permanent Supportive Housing (PSH)



it is an affordable housing option that has an indefinite rental assistance paired with services to help homeless people with disabilities achieve housing stability

### Rapid Re-housing (RRH)



a model that emphasizes housing search and relocation services and short-and medium term- rental assistance to move homeless people as rapidly as possible into permanent housing

### Transitional Housing (TH)



these are temporary housing units designed to help people gain stability through supportive services and successfully transition into permanent housing.

### Support Services Only (SSO)



service providers conduct outreach to sheltered and unsheltered homeless persons, link clients with housing or other necessary services and provide ongoing support.

## Who is part of the CoC?



# FEHC COMMITTEES



## Board

The FEHC Board of Directors creates standing and ad-hoc committees, reviews the plans of work of the committees and makes recommendations to the Coalition for action; take action on the necessary business of the Coalition and conduct other such business as directed by the coalition. The primary function of the Board is to move forward the goals and objectives of the strategic plan.



## Systems

Focuses on creating a plan to facilitate communication between systems of care to streamline discharge protocol and avoid discharging clients into homelessness. This committee collaborates with corrections, foster care, and behavioral health/primary healthcare. This committee also identifies emergency and permanent housing needs while assessing best practices for action in addressing these needs.



## Coordinated Entry Committee

The Coordinated Entry (CE) committee reviews the priority listing and identifies housing opportunities for PSH units. CoC and non-CoC funded community programs serve as a point of entry through a no wrong door approach. This allows for any individual experiencing homelessness to have access to the Coordinated Entry Assessment and be referred to eligible CoC funded housing programs



## Governance

Reviews and recommends actions to be taken as per bylaws and governance charter. Ensures compliance with HUD requirements of CoCs and is responsible for reviewing and approving letters of support for housing grants.



## Operations

This committee carries out Rank and Review of funded agencies and the funding application, point in time annual survey of homelessness, monitoring the performance of funded agencies and HMIS data review. Lastly, the committee identifies needs, trends, gaps, emerging issues and the designation of HMIS and oversight of the operation of the HMIS.



## HMIS Advisory Committee

This Committee is to work with the HMIS System Administrator to ensure proper and effective HMIS policies and procedures.

## How to join the CoC:

Complete a Membership Application



You can sign up for committees by submitting a membership application or by emailing Joan Spector  
([jspector@caresny.org](mailto:jspector@caresny.org))