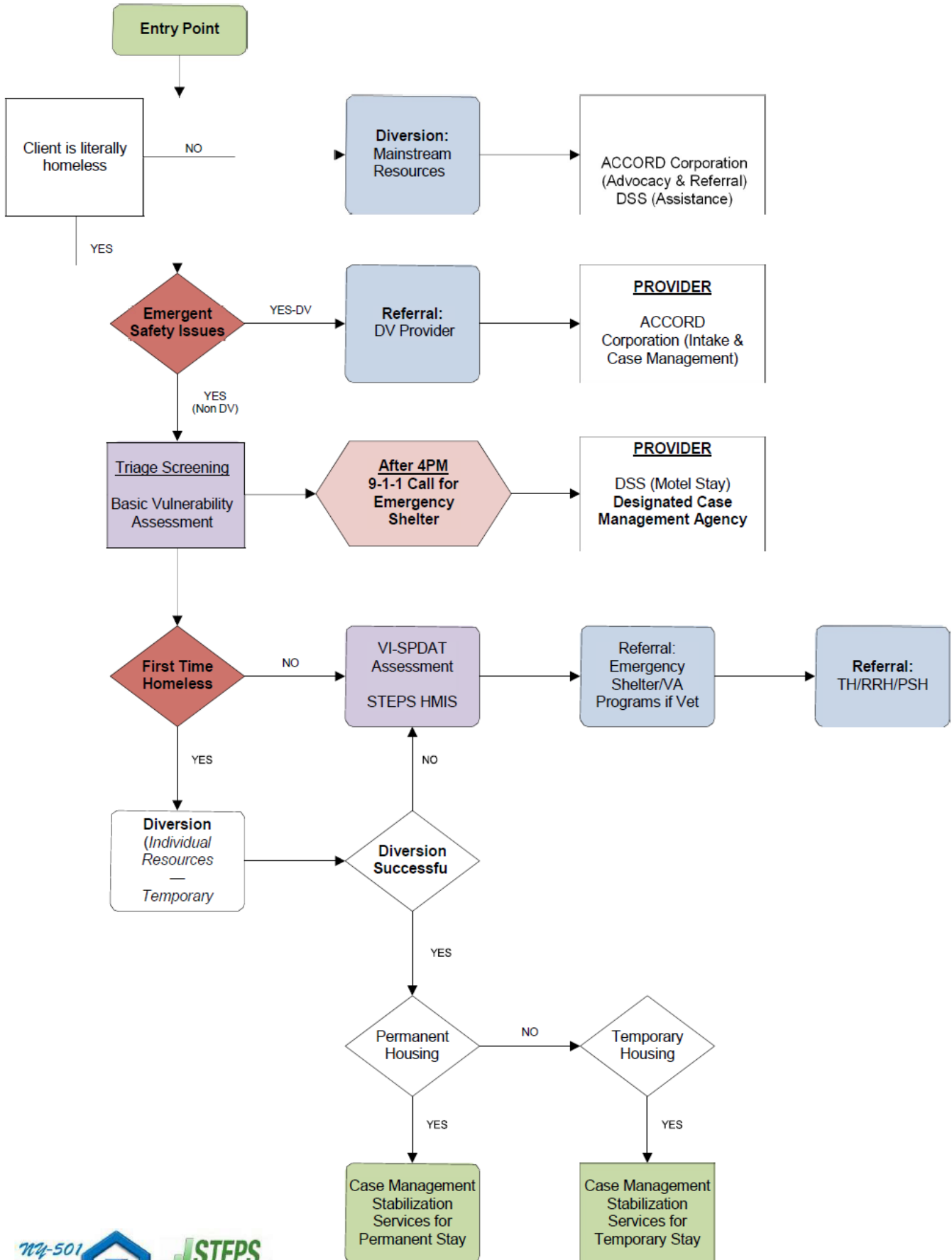
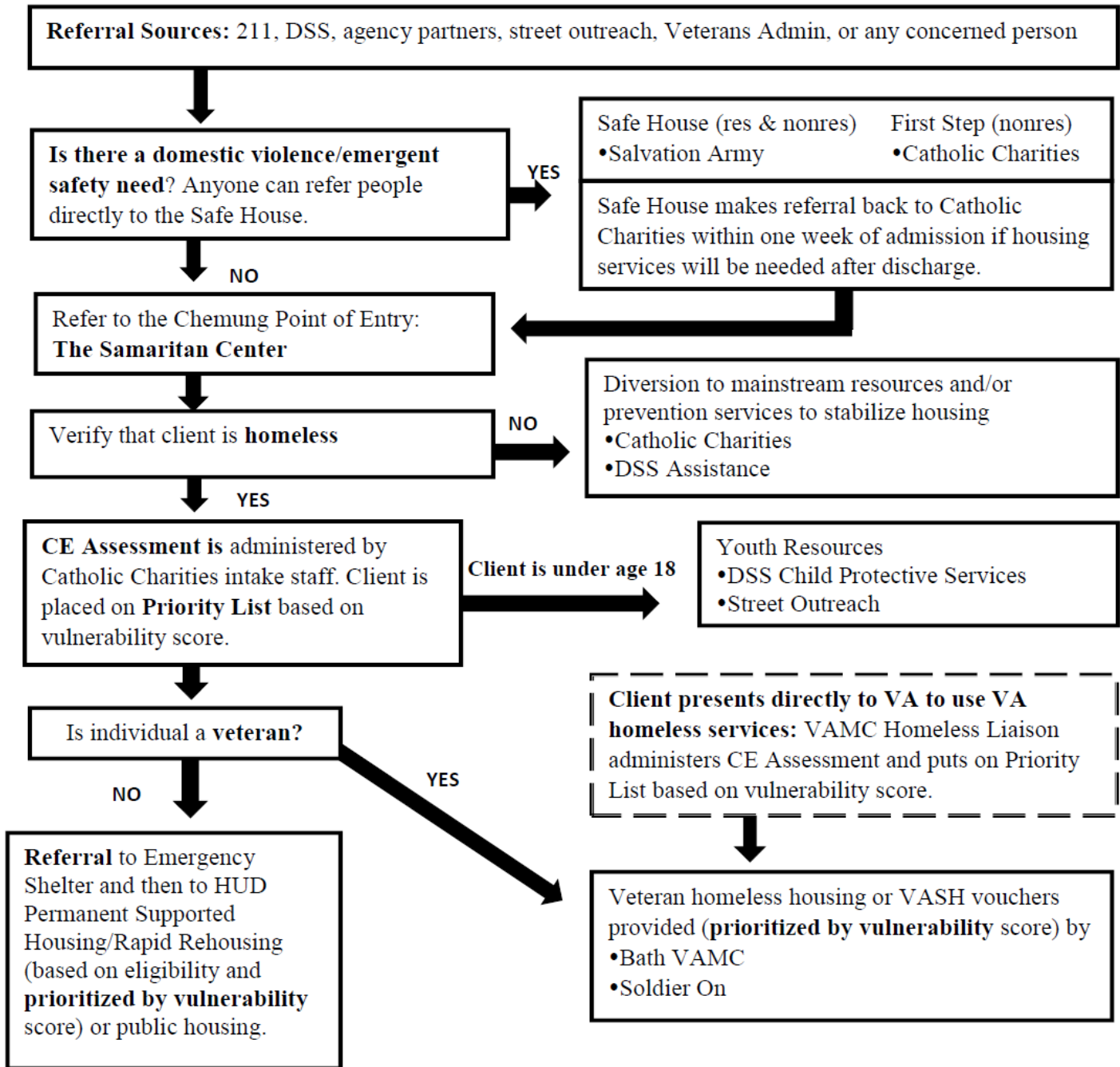


ALLEGANY COUNTY COORDINATED ENTRY DECISION TREE



Catholic Charities of Chemung/Schuylers
Chemung County Coordinated Entry (CE) Decision Tree

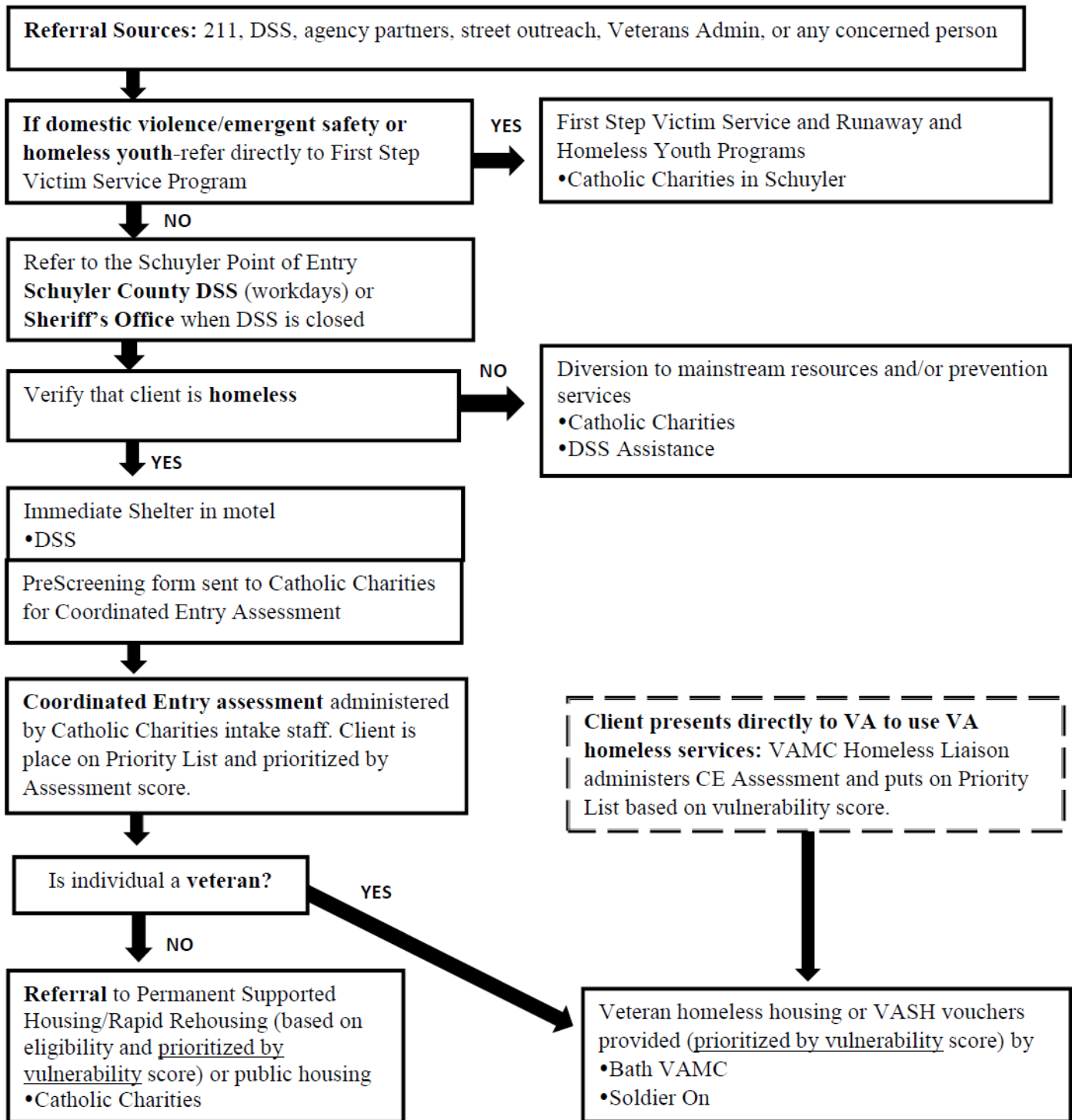
Revised 12-13-18



Homeless: An individual or family who lacks a fixed, regular and adequate nighttime residence, meaning the individual or family has a primary nighttime residence that is a public or private place not meant for human habitation or is living in a publicly or privately operated shelter designed to provide temporary living arrangements. This also includes individuals who are exiting an institution where he or she resided for 90 days or less who resided in an emergency shelter or place not meant for human habitation immediately prior to entry into the institution.

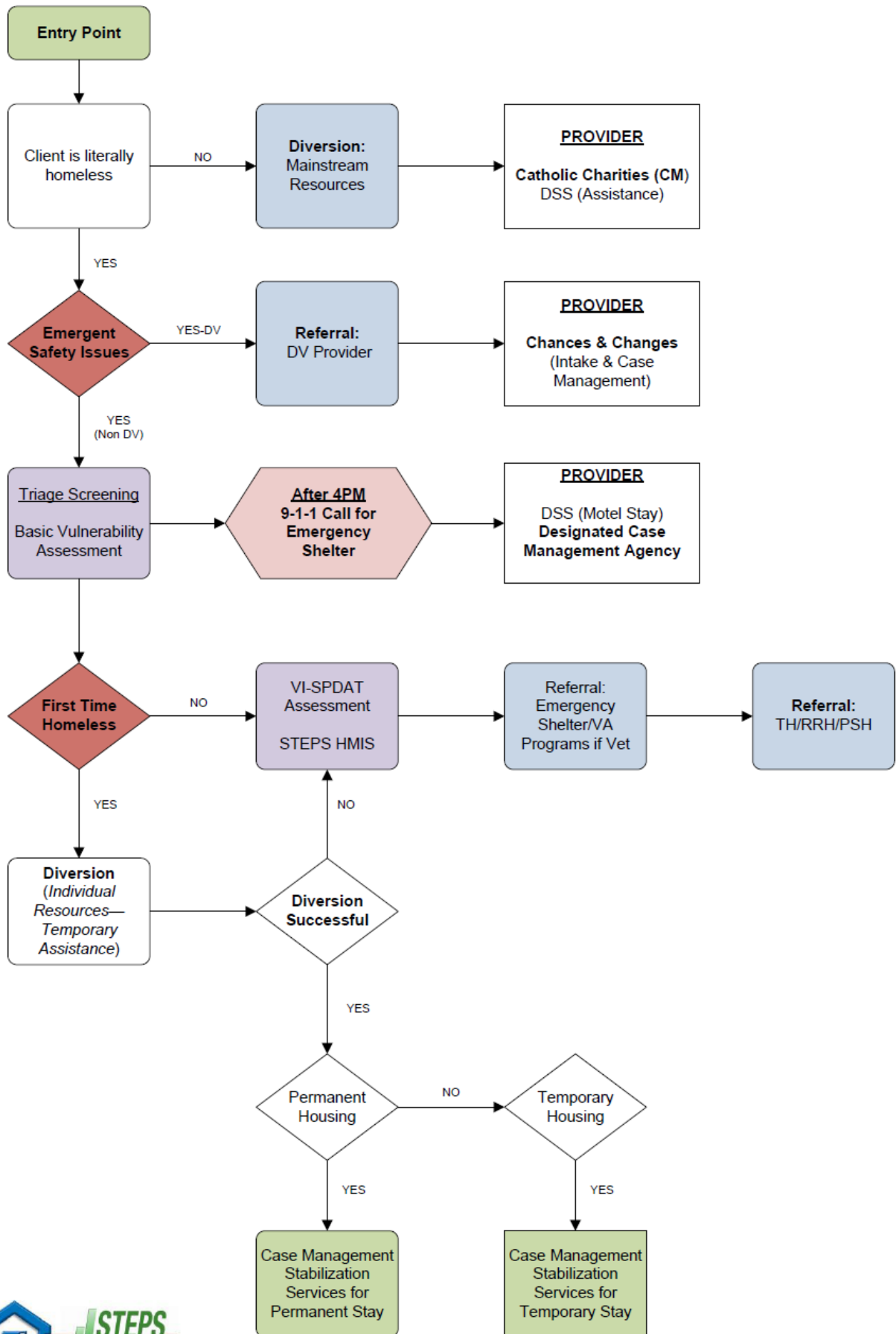
Catholic Charities of Chemung/Schuylers Schuylers County Coordinated Entry Decision Tree

12/13/18



Homeless: An individual or family who lacks a fixed, regular and adequate nighttime residence, meaning the individual or family has a primary nighttime residence that is a public or private place not meant for human habitation or is living in a publicly or privately operated shelter designed to provide temporary living arrangements. This also includes individuals who are exiting an institution where he or she resided for 90 days or less who resided in an emergency shelter or place not meant for human habitation immediately prior to entry into the institution.

LIVINGSTON COUNTY COORDINATED ENTRY DECISION TREE 2015—V3.3



Steuben County Decision Tree Dec 2018

