



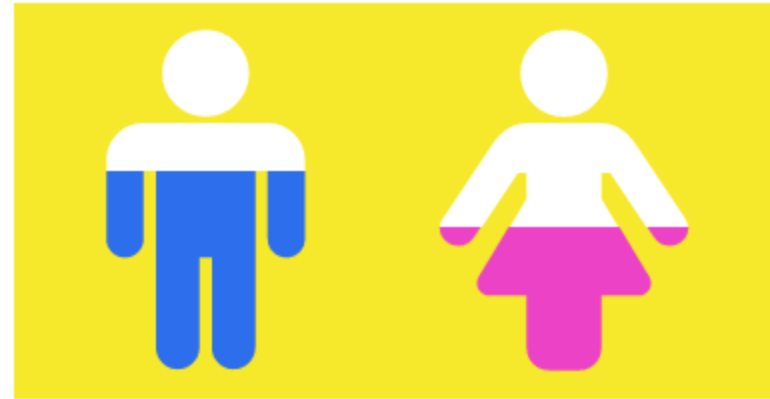
Demographics

Representing 671 Homeless Persons receiving service as reported in CRHMIS



Homeless Individuals

55% of all Households are comprised of One Person



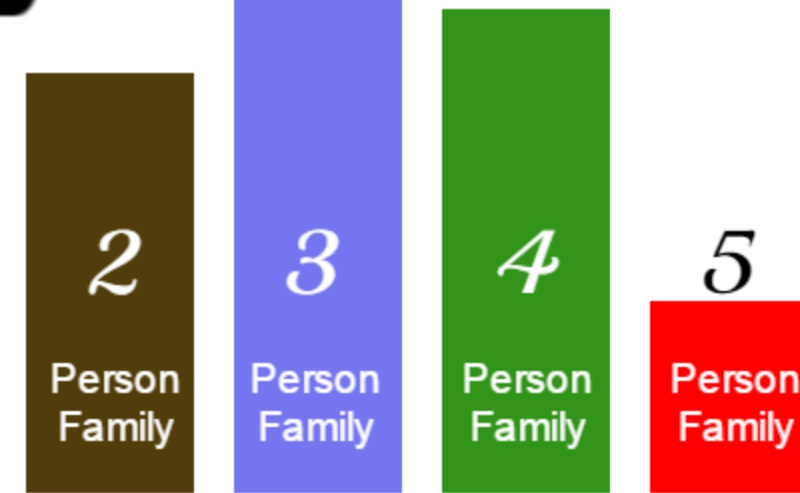
57%

43%



Homeless Families

Household Size



26%

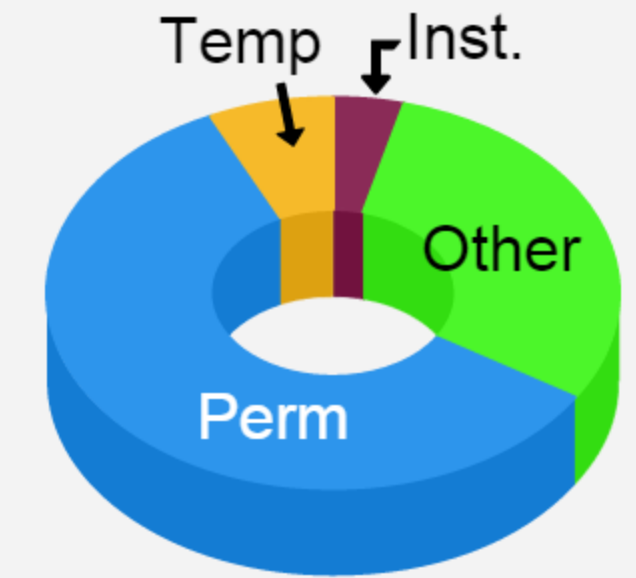
32%

30%

12%



Discharge Outcomes

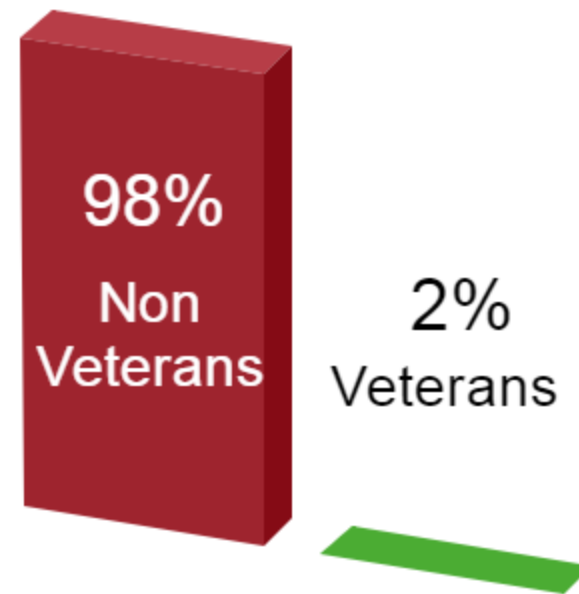


4% Institutional
59% Permanent

30% Other
7% Temporary



Homeless Veterans



98%

Non Veterans

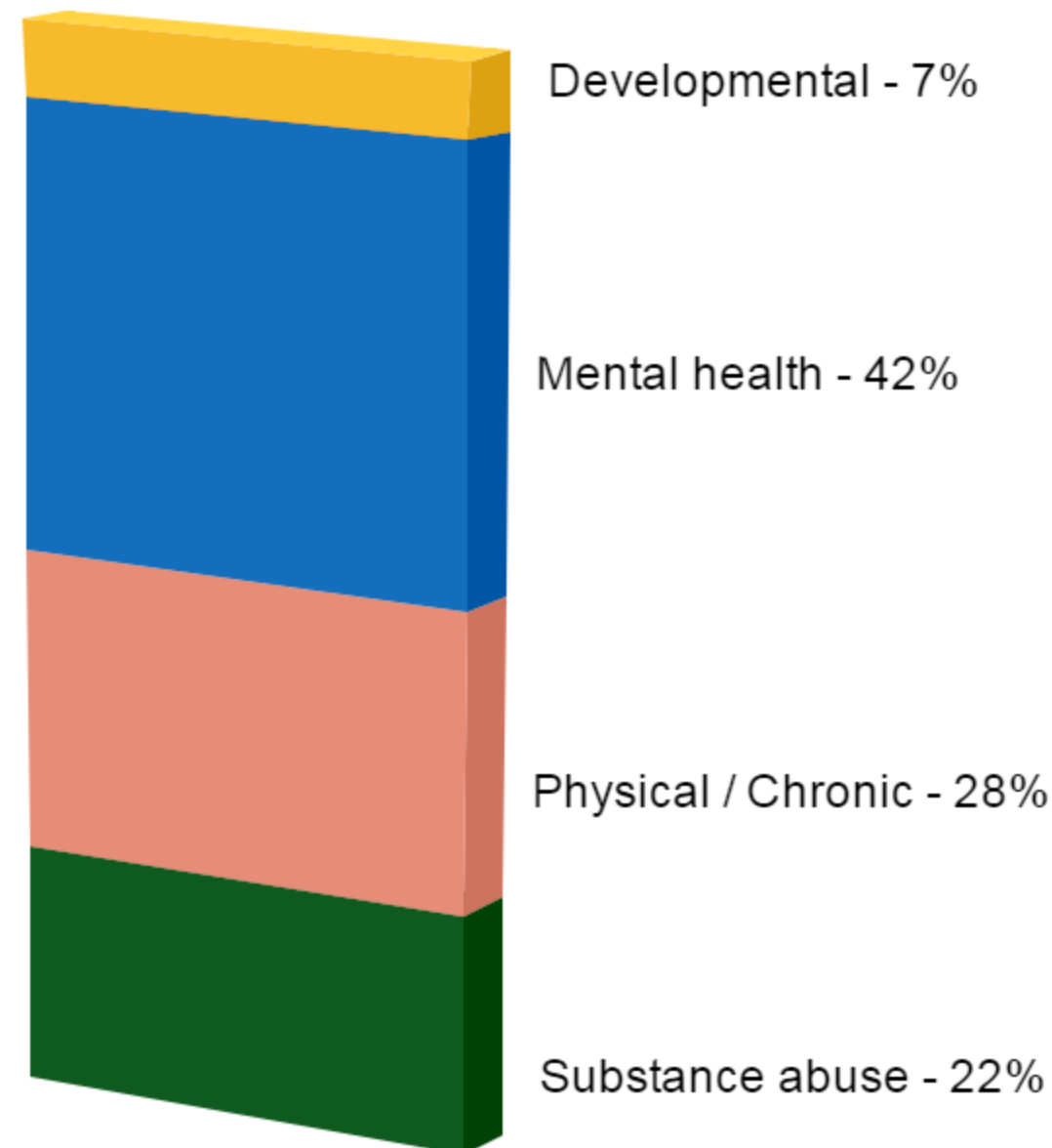
2%

Veterans



Disabling Conditions

51% of homeless people served reported a disability

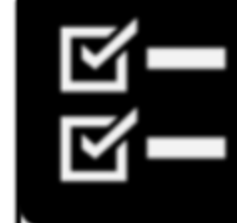


Developmental - 7%

Mental health - 42%

Physical / Chronic - 28%

Substance abuse - 22%



Data Quality

(Missing/null data 5% or greater)

Data Element Residential
No problem reported Missing / Null

Data Element SSO/Outreach
Social Security Number 33%

Extent of Homelessness Questions:
Number Of Times The Client Has Been Homeless In The Past Three Years 10%



Chronically Homeless

(6.4%)



For complete reports and other information, visit caresny.org, and choose "CARES Regional HMIS & Reports" from the HMIS menu!

cares inc.

NY-608 - Kingston/Ulster County CoC

2nd Quarter, 2015 Fiscal Year